



## December 2024 Newsletter

Monday 2 <sup>nd</sup> December		Monday 9 <sup>th</sup> December	Dietitian cooking with diabetic students. Parent Forum – Safeguarding/Online Safety 6-7pm
Tuesday 3 <sup>rd</sup> December		Tuesday 10 <sup>th</sup> December	
Wednesday 4 <sup>th</sup> December	Theatre Trip – Blood Brothers	Wednesday 11 <sup>th</sup> December	
Thursday 5 <sup>th</sup> December	KS3 Supporting Success Evening	Thursday 12 <sup>th</sup> December	
Friday 6 <sup>th</sup> December		Friday 13 <sup>th</sup> December	Christmas Jumper Day Christmas Dinner

### Dates for the Diary

#### **Monday 16th December**

Carol service at Church of the Resurrection

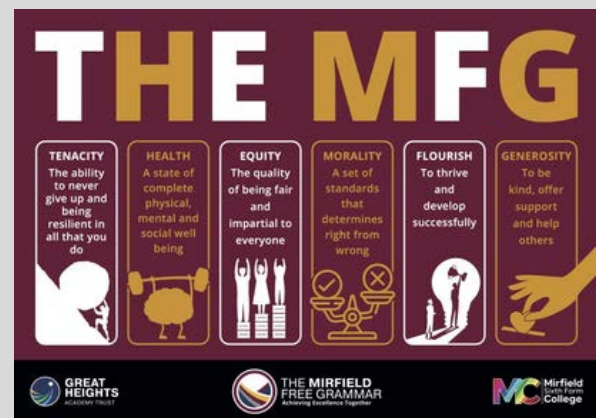
#### **17-19th December**

Student Rewards

#### **Friday 20th December**

Last day of Term

### Values



### Message from the Principal:

In this newsletter it is great to be able to share with you some information on our new Character Leads. Our character development for all our students is important and this year each year group has a Character Lead to develop our school values.

Last month, Ofsted visited our school, and I am exceptionally proud of all our students. They displayed The MFG values, even during a cold, snowy week.

We have had a busy few weeks, with Year 13 parent's evening and the Year 11 and Year 13 students starting their PPEs. Year 11 students have again shown our values during their practice exams.

Over the next few weeks as we build up to Christmas there will be various activities taking place in school showing generosity to our local community and also celebrating our students' successes over the Autumn term.

As communicated previously, every Friday afternoon there is a Principal's Drop in where I will be available to meet any parents/ guardians if you wish to do so.

Many thanks

*Mrs Alexandra Fuller*

# Character Leads

**Year 7**

**Mr Thompson**



Hello, my name is Mr Thompson, and I have been proud to work at The Mirfield Free Grammar since 2016.

Over the years I have taken on various roles, including working in the SEND department, supporting students in specialised provisions, working with previous Year 11's as a year leader, and recently joining our Maths Department. Each of these roles has helped me build valuable skills that contribute to nurturing and developing the whole individual. As a previous student of The Mirfield Free Grammar, I have walked in the very same footsteps as our Year 7 students and understand the journey they are embarking on.

I am excited to support and guide the Year 7 cohort, working alongside a dedicated team to help every student achieve their full potential and strive for excellence.

I joined the MFG in January 2024 as a Geography Teacher. I have recently joined the Character Team as the Character Lead for Year 8. My role is to support Year 8 with their attitude to learning and celebrate their successes in and outside of school. This will include celebrating their positive behaviour rewards, student leadership opportunities and enrichment activities. I am really looking forward to working with this year group, their families and Mr Knowles the Year Leader. Year 8 have had a brilliant start to the academic year and I am confident they will continue to do so.

**Year 7**  
**Miss Bell**



## Year 9

### Mr Woodhouse



Hello my name is Mr Woodhouse and I have recently been appointed Character Lead for Year 9. I have worked with the year group before when they were in Year 7, they are a fantastic year group and I can't wait to get started working with them throughout this year. Year 9 is an important year; the year the students choose their GCSE options. These options can help mould and shape their future endeavours; I will do the utmost to ensure every single student in Year 9 will be helped and supported properly throughout this process. I also can't wait to start planning lots of brilliant rewards for them! They are an amazing year group and their achievements need to be recognised and rewarded

Hello! I'm Mrs Hattersley & I'm a Drama Teacher and the Character Lead for Year 10! I'm so grateful for the opportunity to guide our Year 10 cohort as they embark on their GCSE's, support them through a crucial time and help them achieve their full potential academically and beyond! I am so proud of this year group already, what they have already achieved and the amazing and positive start they have made to KS4! I cannot wait to see what else they achieve and how they continue to show and develop their amazing MFG character!

## Year 10

### Mrs Hattersley



## Year 11

### Miss Emenike



I'm Miss Emenike. I joined The MFG in my first year of teaching as a Maths Teacher and now the Character Lead for year 11. It's a role I am honoured to be in, as my current year 11's also started their high school journey the same year as I did so I feel that I have grown with them and learned a lot about them in that time. I am really looking forward to all the amazing things this year group are going to achieve in their time left at The MFG including hosting a fantastic but no doubt emotional prom in the summer of 2025.

## Parking reminder

Parents and local residents have raised concerns with us around the parking of vehicles around the school site, both before and after school.

**Please can I remind you not to park on double yellow lines or the yellow school zig zags.**

It is great that we now have a Zebra Crossing outside school, we have been encouraging students to use this to ensure they keep themselves safe getting to and from school.



# Attendance

I'm writing to remind you of the importance of regular school attendance and to update you on the new guidance from the Department for Education (DfE) on improving school attendance.

The DfE has issued new guidance highlighting the key role consistent attendance plays in academic success. It outlines expectations for schools, parents, and local authorities to work together to ensure all children have access to a quality education. We are committed to supporting your child's regular attendance.

Why is attendance important?

Regular school attendance is not only a legal requirement but also crucial for your child's development. Consistent attendance helps children reach their full potential and build key social skills. Research shows that even occasional absences can impact progress – every day counts!

Key points from the new DfE guidance:

- Clear policies: Schools must have clear attendance policies. The MFG have updated these, so please familiarise yourself with any changes.
- Prompt reporting: Parents must notify the school on the first day of absence, providing reasons and expected return dates.
- Early intervention: Schools and local authorities will work together to address attendance concerns early.
- Legal duty: Parents must ensure their child attends school regularly. Persistent absence may lead to further action.

How you can support your child's attendance:

1. Set a regular bedtime and morning routine.
2. Do not book term-time holidays and schedule appointments outside school hours. If there is an unavoidable medical appointment, please make the school aware in good time and record it in your child's planner. It is then your child's responsibility to ensure they go to reception at the time stated and sign out. They will not be allowed to sign out without school receiving permission from their parent/carer.
3. Communicate any attendance difficulties to the school for support.

Punctuality

- Tutorial starts at 8:30am. Students are expected to be in their tutor groups at this time.
- The late bell sounds at 8:35 and any student not in tutorial at this time may receive a L mark and a sanction.
- Students who are often late miss important information that is shared during tutorial.

We are here to assist you with any attendance concerns, by working closely together we can ensure that every child can reach their full potential. Thank you for your continued support in helping your child succeed.

## School Calendar



The school calendar is now available to view on the web site here: <https://themfg.co.uk/key-info/calendar/>  
It contains all parents evenings, examinations dates and other events.

This page will be kept up-to-date throughout the year. For Achievement Reports, information can be found here:

<https://themfg.co.uk/key-info/achievement-reports/>

This page contains the dates reports will be sent home, how to access reports on the Arbor Parent Portal, and information about the new Key Stage 3 reporting system.

## Wet and Cold Weather

**Now that the weather has changed and the dark days are upon us, please could you ensure that students dress appropriately in rainy and cold weather.**

**A warm coat (ideally waterproof) and an umbrella will see them through the many downpours that seem to happen just as they arrive and leave school.**

**This will hopefully save them arriving to school, and getting home, drenched and cold.**



## The MFG Christmas Kindness Project

Lots of vulnerable people in our local community will be spending Christmas alone, in their care home.

The MFG Christmas Kindness Project is going to support lots of families as we spread Christmas cheer to those who need it.

We are asking students to donate to the Kindness Project if able, by donating the following items, each KS have been asked to donate different items:

### **KS3 -**

- Chocolate
- Savoury Crackers
- Biscuits
- Jam
- Tea/Coffee
- Hot Chocolate
- Sweets

### **KS4 -**

- Soap
- Bubble bath
- Shower gel (male & female)
- Body spray (male & female)
- Sponge
- Face cloth
- Bath bombs

### **KS5 -**

- Donations to the foodbank that is situated in Mirfield College - these must be non perishable items



Please can all donations be brought into school by Friday 6th December.

Kirklees Duke of Edinburgh's Award  
**Christmas Fayre**

**Saturday 7th December 2024**

Little Deer Wood

Shepley Bridge Marina, Mirfield

from 11am, last entry 3pm

£1.00 entry fee



**Free Parking at Dr Reddy's  
with minibus transfer.**





# FAMILY DROP IN

FREE

## Every Monday

10am-12pm  
(term time only)

For parents and carers with  
children under 5

Family advice, support and information

Light refreshments provided

A variety of interactive play activities such as  
treasure baskets, sensory play, messy play  
and free play

Home-Start Kirklees  
Queen Street South  
Huddersfield HD1 3AZ

**HOME  
START**  
Kirklees

 Kirklees  
Families Together

[www.homestart-kirklees.org.uk](http://www.homestart-kirklees.org.uk)  
01484 421925



CONTACT US



Starting  
13th  
January  
2025

FUN



COMMUNITY



PLAY



## AGED 13-25 AND LIVING IN ENGLAND OR WALES?

### HAVE YOUR SAY ON POLICING NATIONALLY

The survey is for young people to have their voice heard on a national level by senior leaders - a chance to say "we're here"!



Take the  
survey  
now

### Deadline 13th December 2024

The IOPC Youth Panel wants to hear your views on policing in your community and the police complaints process.

Responses will be used to produce national recommendations for change for police forces, PCCs and partner agencies.



**IOPC** Independent  
Office for  
Police Conduct

**LEADERS  
UNLOCKED**

# Kirklees Community Directory

Please use the below link to access the Kirklees Community Directory. This is a great place to look to find activities and events that are happening around Kirklees.

<https://communitydirectory.kirklees.gov.uk/communityDirectory/whatsOn.aspx>



Community Directory  
Be part of something bigger

About

Promote your organisation  
[Login or Register](#)

Local organisations

What's on

Things to do

My neighbourhood



### Local organisations

Find and get in contact with local organisations.



### What's on

See events across Kirklees, from festivals to theatre.



### Things to do

Take part in regular activities in your community.



### My neighbourhood

Find local organisations in your ward.

We've created the Community Directory to make it easy for you to find local groups, events and things to do. It's the most detailed and up-to-date directory of active community organisations in Kirklees.

#### Top 10 features

- Over 2,300 local community organisations - and counting.
- Email your search results - to yourself or someone else.
- Download contact lists for local organisations.
- Use 'My list' to pick and choose groups as you browse.
- Filter your search results by location.
- Find activities on a particular day or at a particular time.
- Be social - use 'Share this page' to let friends know about useful stuff.
- Lots of events across Kirklees, with links to the organiser and venue.
- Organisations can quickly add or edit details and post new events.
- Great for promoting your group - we'll also share things in other places online.